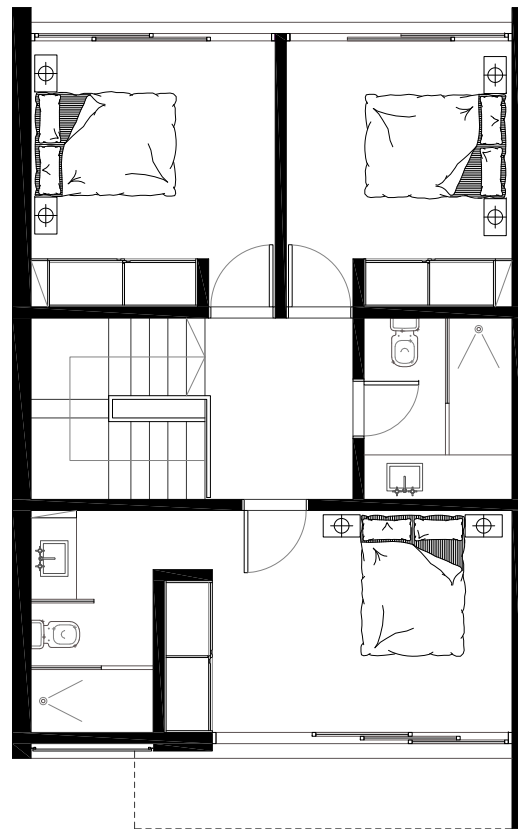
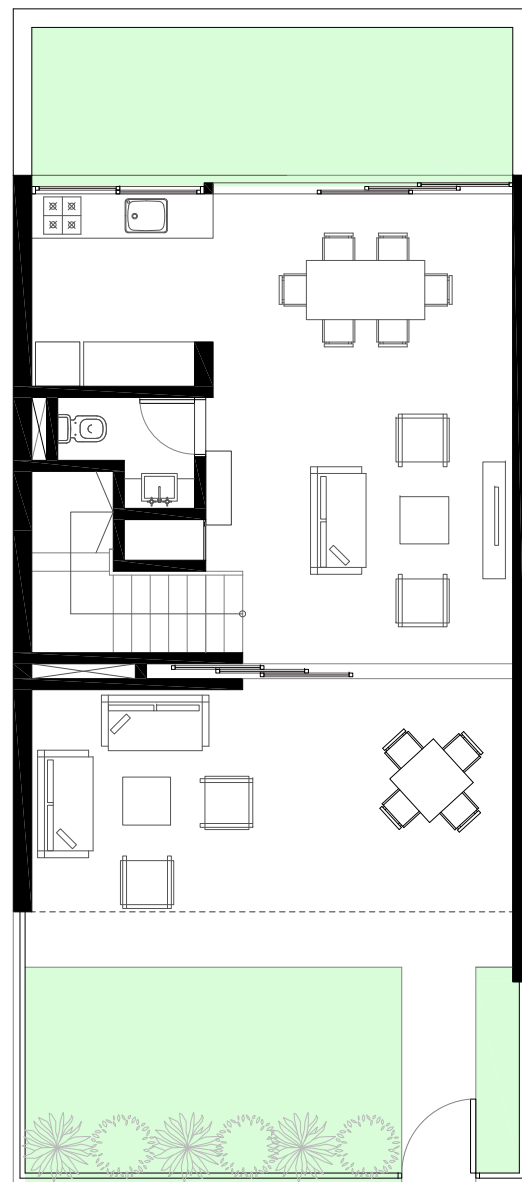


# ELONA

## Town house



### SUPERFICIES PRINCIPALES

#### PRIMERA PLANTA

|                  |          |
|------------------|----------|
| Sala             | 27.81 m2 |
| Cocina           | 6.98 m2  |
| Terazza cubierta | 20.75 m2 |

#### SEGUNDA PLANTA

|                      |          |
|----------------------|----------|
| Habitacion principal | 14.09 m2 |
| Baño                 | 5.96 m2  |
| Habitacion           | 12.19 m2 |
| Habitacion           | 11.27 m2 |
| Baño comun           | 4.90 m2  |

**SUPERFICIE CONSTRUIDA 136.61 m2**

Jardines, pasillos 35.17 m2

**SUPERFICIE TOTAL 171.78 m2**

**SUPERFICIE DEL TERRENO 104.52 m2**

**US\$ 260,000.00**